



News Letter

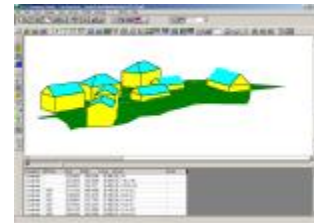
August
2002

NRG Survey System for Windows: Version 6

John Finnerty

Anyone calling for support over the last 10 years will be familiar with John, who tragically died this summer whilst out walking in the mountains. It appears he slipped and fell some 80 feet down the mountain known as 'Tryfan'. John was an extraordinarily gifted man. After taking a degree at Cambridge he worked as a programmer for ICL where he worked on a variety of hi tech projects. Fortunately for us he chose to move to North Wales where it seemed he was prepared to take virtually any job just to be near the mountains. At the time we were a growing software house and John quickly established himself developing code for the Civil Engineering industry, embarrassing all of us by learning the technical aspects of the software that as engineers we'd spent most of our lives trying to get to grips with. He was a very modest man, seemingly unambitious but who relished in solving the most complicated of problems. One of his last contributions to NRG was the 3D viewing with hidden line removal and a drive

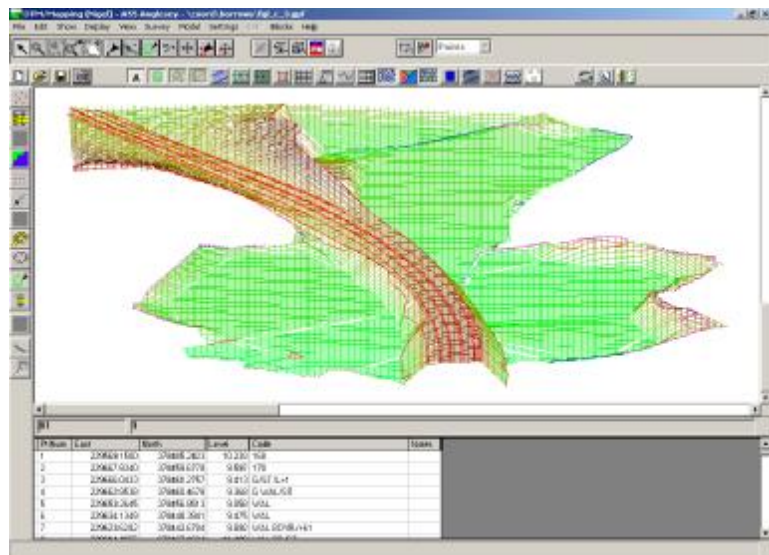
through capability. Version 6 was almost complete before John's departure and Eddie and Iain have worked hard getting this release finished. Out of respect for John we have dedicated this version to him and hope that he would have been proud of the final product that he contributed so much to.



Hidden line removal



Settings for 3D perspectives now include; hidden line removal, choice of perspectives, distort vertical scale and an option to store a series of views along an alignment.



3D view with hidden line removal

William Gates

A large amount of work we've been doing this last year has been involved with maintaining compatibility with various Windows operating systems and the ever increasing complexity of peripherals. Many of which John was a little contemptuous of and we thought we'd share some of his comments that appeared in one of John's program logs.

19-20.11.98

Q: Whats the difference between Windows 95 and a bucket of shit?

A: The bucket.

Q: Whats the difference between that joke and Windows

A: In the case of Windows, the old ones really are the best.

23.11.98

Q: whats the difference between Windows 95 and AutoCAD?

A: The bucket.

24.11.98

Q: Whats the best program you can get for Windows 95

A: A Windows 3.1 emulator

26.11.98

Martin's mate got a Microsoft Welcome Pack as a new Microsoft user. It contained a t-shirt, a yo-yo and a pen. The pen doesn't work.

27.11.98

Can't think of a Bill Gates joke today but it doesn't mean I don't still hate him.

30.11.98

Windows 95 is carp as sloe is to sole

1.12.98

This is no longer a joke. This is an operating system in which you can't even make a copy of a file without a posse of experts to help you!!!!

4.12.98

.. and nobody knows how to copy a print file to the printer in it!!!!

8.12.98

Windows 95 crashed in File Manager yesterday - I think its jealous

15.12.98 (sorry I've been forgetting to write.

Martin was opinion polled by Microsoft yesterday and didn't mention my views!!!

13.8.99

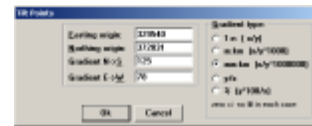
Q: How many Microsoft Engineers does it take to change a lightbulb?

A: None -the dead bulb is a feature.

Toolbars

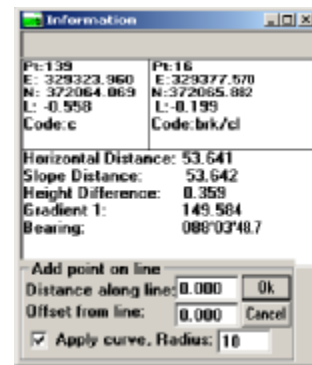
As you'll probably see when you boot DTM Map for the first time, we've added two new toolbars, one is the selection toolbar which lets you select points easier, but more to the point lets you switch off selection mode much easier. The other new toolbar we've called the 'show' toolbar but in fact contains most of the common functions used, including the new background. This feature has been added to help in auditing a large survey, by selecting a background, the current window is highlighted so that when you move around the survey it's possible to see the areas already viewed.

Tilt



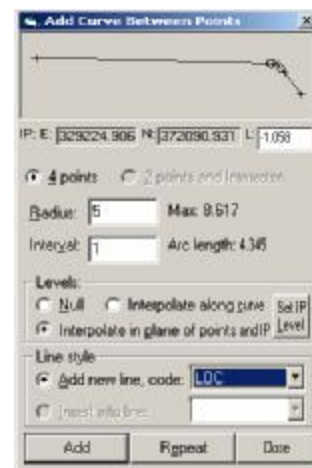
Tilt has been added to help with GPS support so that if the transformation parameters are known, then points which haven't been through the transformation process can be manually adjusted.

Add Point on Curve



A new addition to add point on line is the ability to enter a radius between the two points.

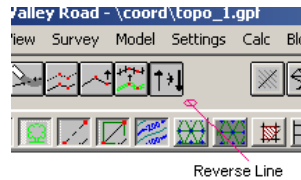
Add Curve



Add curve will add points around a curve by selecting either two intersecting lines or two points and the IP. This is really useful in generating the curves on

bell mouths or road junctions. The option to interpolate levels through the plane of the 3 points (one being the IP) will provide the correct setting out levels.

Reverse Line



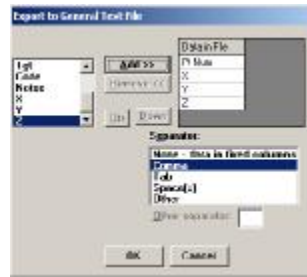
Reverse line re-orders the points on a line. Used to make lines more continuous when they have been surveyed in opposite directions.

LAT LOS Commands



New commands have been added to support our windows CE loggers for point offsets. LAT being the lateral offset of a point from the line of site from the instrument, -ve is the instrument observers left +ve is to the right. LOS is the linear offset along the instrument observers' line of site, -ve is towards the instrument, +ve is away.

Export Generic File format



In response to popular demand we have added an export option to export to a generic file format, with the user specifying how the export file is to be made up.

Volumes Manager



We've finally added a button to take you straight to volumes manager. We've not really advertised this module but it's designed to take volume reports generated with cross sections and DTM, collate the information and present reports and mass haul analysis determining the cheapest routes to haul materials.

Maybe we'll sell a few now that we've actually added it to the main login.

The New CD

The CD now contains all of our software, including a set of power point demonstrations of our various products.

Run 'Menu' from the CD route directory and you can install the latest manuals, help files and software or run a demonstration. We've

also changed the way the level book and Engineering calculator are sold, these may be installed from the CD and a password purchased over the phone.

Finally

Many thanks for your continued support over the years. We have a number of projects under development at the moment and have some radical changes to come in version 7 but if you have any suggestions or comments we are always very pleased to hear them, email us at support@nrgsurveys.co.uk or call Nigel or Eddie



Castle View, Station Road
Llanfairfechan, Conwy.

Tel: 01248 681240
Fax: 01248 680914
email:nrg@nrgsurveys.co.uk