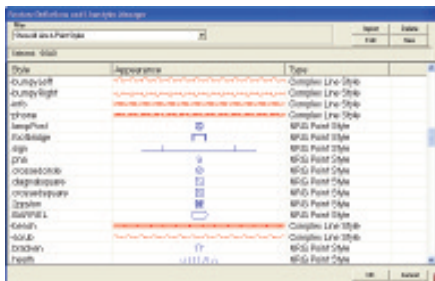


## Point and Line Style libraries

Our line and point styles have always been made using complex shapes, why AutoCAD with its huge resources find this so difficult I am at a loss to know. Anyway in order that the user can manage the line and point styles we've created a line and point styles manager.

This will let you load libraries from CAD, edit and delete them etc. You can also see clearly from the manager which lines are inherently supported by CAD ( windows and CAD ones ) and those which they can only understand in 2D ( Complex )



Access the line and point styles manager from the Display menu or from the features manager menu.

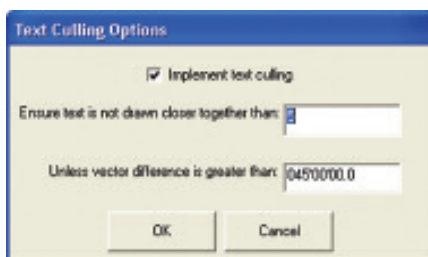
Right click on a style to edit, or use the edit button.

## Text Culling

In the display menu there is now a Text Cull option, with 4 sub options

- Restrict Line feature text**
- Remove text overwrite**
- Replace culled text**
- Text Cull settings**

## Restrict Line feature text



This enables the user to set a minimum distance between text on lines in an attempt to prevent text overwrite.

