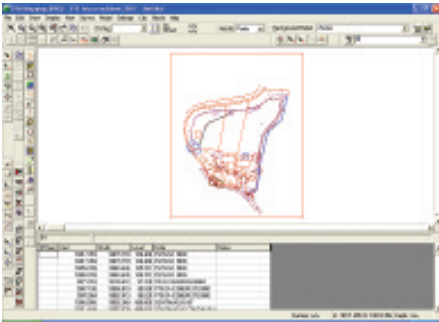


You can always use the new line and point styles manager to edit individual lines and points, or delete them if necessary.

Finally, you'll have a drawing in DTM Map which matches the Autocad drawing.



A tip by the way, if you only have a few points with levels in your drawing, you can model these separately and 'shift' points onto that model to interpolate between them.

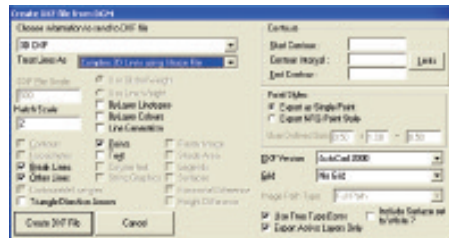
Line Styles

We have introduced the concept that there are 3 classes of lines available, these are:

Windows CAD Complex

The reason is entirely because Autocad cannot deal with 3D complex line styles. The solution to this is to either export your complex line styles as a block overlay or as a shape file. The disadvantage of shape files is that they then have to be compiled into the drawing using CAD, although that can give a preferable solution to using blocks, since these can be difficult to edit in CAD.

Another option is not to use complex line styles and only use the ones supported by CAD, we've made clear which these are now with the separate classes.



Support of 2D Shape files for line styles has been re-introduced.