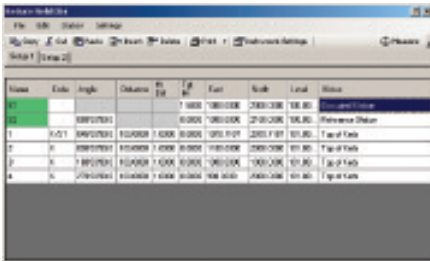


Reduce Field Obs

A much easier to use interface for surveyors than before, plus we have added the ability to communicate with an instrument, effectively making the calculator a logger.

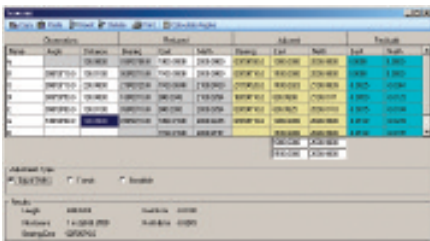
Simply place the cursor on a row and press measure... it couldn't be simpler.

Data Logger, Calculator and Level Book combined!



Traverse

A new traverse editor that reduces and adjusts observations using a variety of adjustment methods.



DXF Viewer / Point selector

Imagine this... a utility to open and view DXF files, allow you to select points, offset them and paste them into the setting out function, you wouldn't believe it would you.



MX Viewer Point grabber

But to do it for MX files is just showing off...

