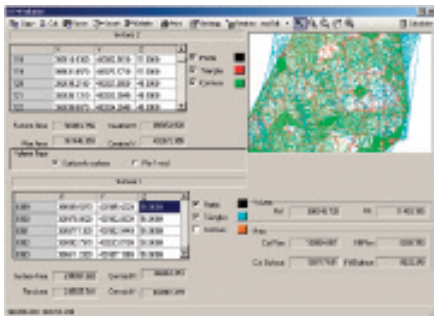


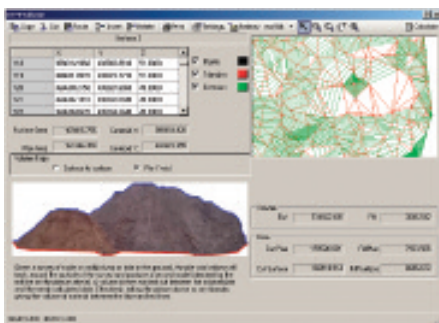
Volumes

Some major changes have been made to the volumes, in particular the user interface.

Now the graphical editing may be done full screen with easier control over deleting and swapping triangles.



Pile / Void Volume

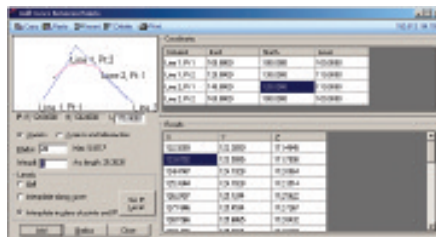


If you only have a top or bottom surface of an excavation or a pile then enter these as surface 2 and press the pile / void button. The perimeter of the model is then used as surface 1 and a volume shown.

Add Curve

To calculate a series of points developed from a curve between two tangent lines.

Enter the coordinates of the tangent lines, a radius and the interval between points.



Level Book

Our popular stand alone level book has been incorporated into the calculator now, it has direct communication with level instruments and will import most data formats... As well as supporting manual input of course.

The printout is rather nice with what we believe will be a 'familiar' look for most users.

