

## Select Points From Background Model

It is now possible to select points from the current background model and paste them into the editor.



Select the pointer to drop the list of options



All



Polygon



Point



Crossing line



Line



View the selection



Paste selection to this model

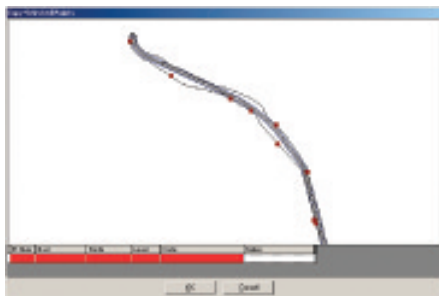


Write selection to a file

## Copying Selected Points to the Clipboard

This option allows you to copy the data for selected points to the clipboard.

From the Select menu, choose Copy Selected and you will be presented with a preview of the points currently selected. From here you can switch columns on and off that you want the data from.



## Swapping Background & Foreground Models



A new button on the background model list allows you to quickly move a file from background into the foreground editor without having to close the file and open it again.

This will also add the current foreground model into the background list.

