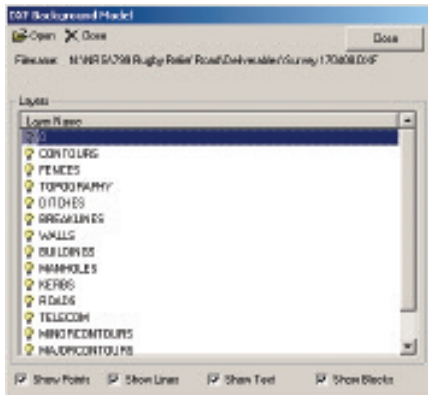



DXF Background









We have added an option to load a DXF file as a background to your survey.

 Use the DXF button to load a file and select the layers and aspects to draw.



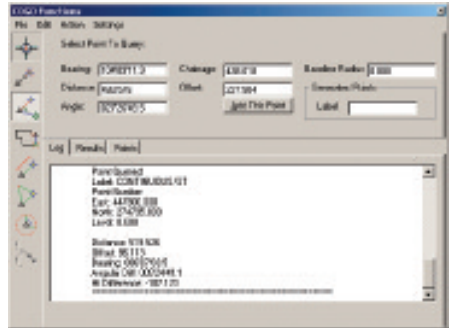
In addition we have added an option to select points from the background and either add them into the editor or write them to another file.

 Select points from the background by one of the options;


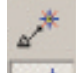






-  All
-  Polygon
-  Point
-  Crossing line
-  Line
-  View the selection
-  Paste selection to this model
-  Write selection to a file

COGO

COGO replaces the point to point function and has a whole range of additional functions.



There are 3 tabs, the Log tab showing the results of each action in turn. The Results tab which tabulates the results and a Points tab which stores all of the points that have been added. These can be added to your editor model using the add to editor button on the tab.

-  Select base point
-  Select end point (of line)
-  Select point to query
(in relation to the base point and line)
-  Right angle point entry
-  Add multiple points on the line
-  Intersect distances
-  Add circle of points
-  Attach levels to points